



Printer Driver Manual

Label Printer

Ver. 5.07

<http://www.bixolon.com>

Introduction

This printer driver Manual provides information on installation, uninstallation, detailed specifications, and usage of the printer's Windows Driver according to PC operating system (OS).

It is advisable to read the contents of this manual carefully before using the customer display for the first time.

Table of Contents

1. Supported Operating System (OS)	4
2. Supported Printers	4
3. Printer Driver Preparation.....	5
4. Printer Driver Installation.....	6
4-1 Printer Driver Installation	6
4-1-1 Introductory Steps	6
4-1-2 Local Port	7
4-1-3 Network Port	8
4-1-4 USB Port	9
4-1-5 Other Port	10
4-1-6 Printer Options	11
4-1-7 Font Downloader Installation.....	13
4-2 Printer Driver Uninstallation.....	14
4-2-1 Printer Driver Uninstallation	15
4-2-2 Printer Driver Package Uninstallation.....	17
4-3 Printer Driver Update	19
4-4 Steps for downloading fonts	21
5. Printer Driver Settings	26
5-1 Printing Preferences.....	26
5-2 Adding new paper size	27
6. Specifications	28
6-1 Specifications	28
6-2 Paper Size.....	30
6-3 Barcode Fonts.....	30


1. Supported Operating System (OS)

The following operating systems are supported for usage.

Microsoft Windows 7 (32bit, 64bit)
Microsoft Windows 8 (32bit, 64bit)
Microsoft Windows 8.1 (32bit, 64bit)
Microsoft Windows Server 2008 (32, 64bit)
Microsoft Windows Server 2008 R2(64bit)
Microsoft Windows Server 2012 (64bit)
Microsoft Windows Server 2012 R2(64bit)
Microsoft Windows 10 (32bit, 64bit)
Microsoft Windows 2016(32bit, 64bit)
Microsoft Windows 2019(32bit, 64bit)



Caution

- Serial and Parallel printer port do not work on Windows 10 version 1511 (OS Build 105860.104) specific. We recommend you to install the latest Windows 10 update through Windows Update before installing Windows Driver.
- You can download and install the Windows Update in the Update & security tab of the Settings menu.
( > Settings > Update & security > Windows Update).

2. Supported Printers

The Windows driver is available for the following BIXOLON printers.

SRP-S3000
XM7-20, XM7-40
XD5-40t/43t, XD5-40tR/43tR
XD5-40d/43d
XL5-40CT/43CT
XD3-40d
XD3-40t
XT5-40/43/46, XT5-40NR/43NR/46NR
SLP-TX220/TX223, TX420/TX423, TX400/TX403
SLP-DX220/DX223, DX420/DX423
SLP-DL410/DL413
SLP-T400/T403, T400R/T403R
SLP-D220/D223, D420/D423
SRP-770/770II/770III/E770III
SPP-L3000, L310, L410

3. Printer Driver Preparation

The Windows Driver is included in the enclosed CD, and the latest file version can be downloaded from BIXOLON website. (www.bixolon.com)

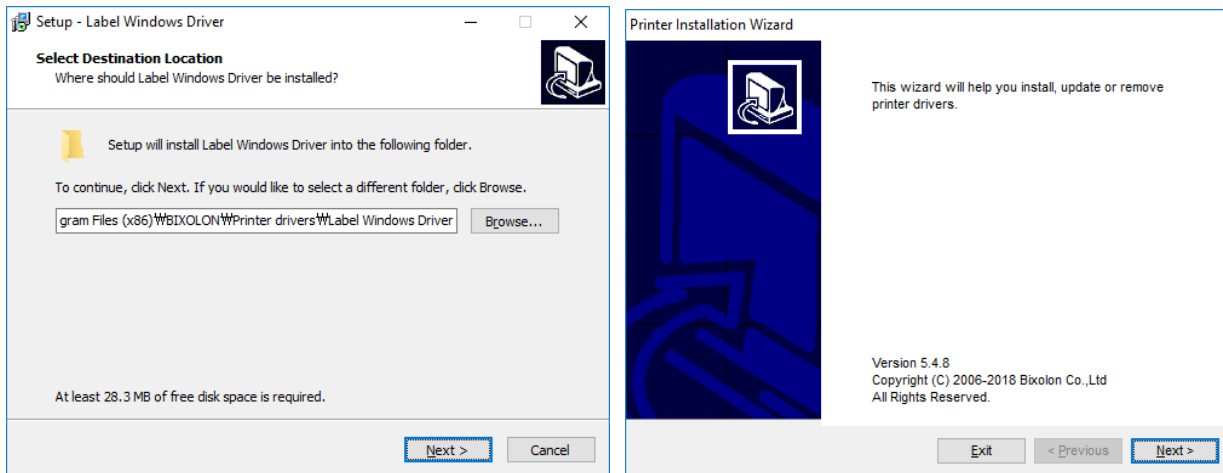
4. Printer Driver Installation

4-1 Printer Driver Installation

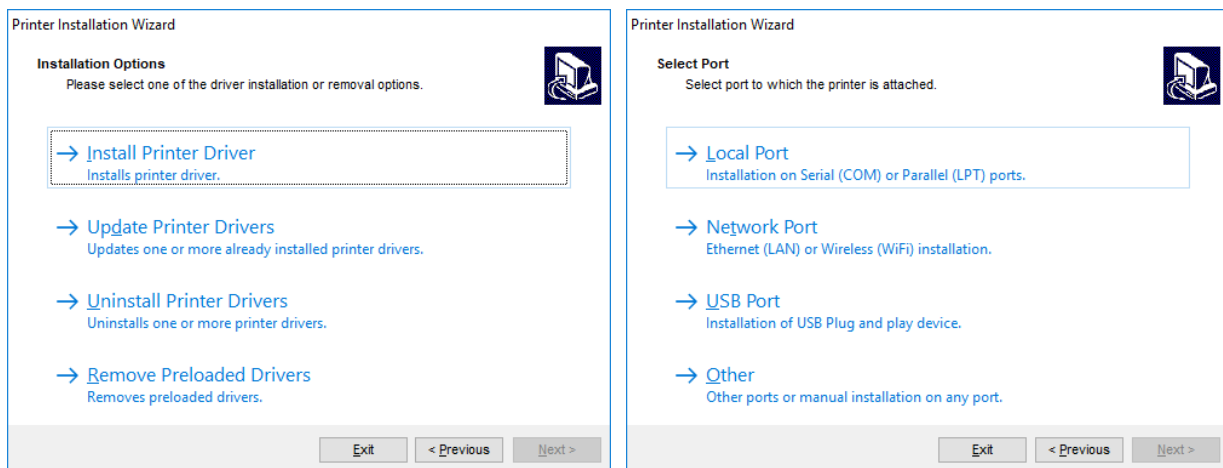
- Run “Software_Label_Windows_Driver_V5.x.x.xxxx.exe” to install printer driver, and follow the steps below.

4-1-1 Introductory Steps

- 1) Set the installation directory, and then click “Next”.
Click “Next” again on “Printer Installation Wizard” window.



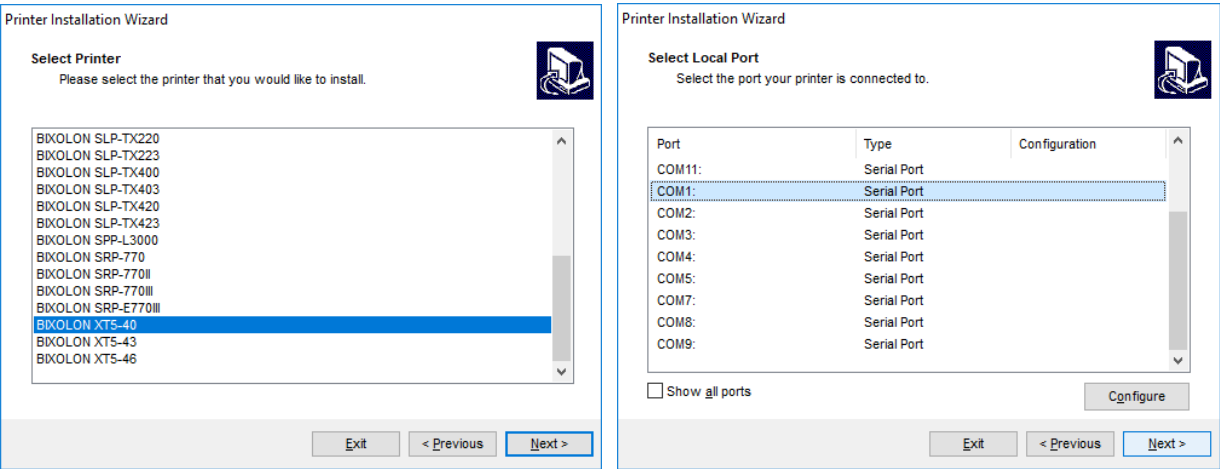
- 2) Click “Install Printer Driver”, and then select the port to which the printer is attached.
Refer to the contents in this manual about printer port installation.




Ports	Description	Reference
Local port	Serial (COM) or Parallel (LPT) ports	4-1-2
Network port	Ethernet (LAN) or Wireless (Wi-Fi) installation	4-1-3
USB port	USB Plug and play device.	4-1-4
Other	Manual installation on any port.	4-1-5

4-1-2 Local Port

1) Select the printer model and the local port to which your printer is connected.




Function	Description
Show all ports	display all available ports on the system.
Configure	set the appropriate port-specific values.

**Note**

If COM port for Bluetooth paired with the HOST(PC) is not in the port list, stop the installation and restart the computer. After restarting, start the installation procedure again.

2) To configure the currently selected local port, click Configure. System dialog opens allowing you to set the appropriate port-specific values.

**Note**

Port(s) which are already taken by other printers are grayed-out.

3) Click “Next” to proceed to Printer Options step. Refer to the description of printer options in 4-1-6 of this manual.

4-1-3 Network Port

- 1) Select the printer model and the network port to which your printer is connected.
If there is no network ports to which your printer is connected in the list, select “Create a new network port” and then click “Next”.

Printer Installation Wizard

Select Printer
Please select the printer that you would like to install.

- BIXOLON SLP-TX220
- BIXOLON SLP-TX223
- BIXOLON SLP-TX400
- BIXOLON SLP-TX403
- BIXOLON SLP-TX420
- BIXOLON SLP-TX423
- BIXOLON SPP-L3000
- BIXOLON SRP-770
- BIXOLON SRP-770II
- BIXOLON SRP-770III
- BIXOLON SRP-E770III
- BIXOLON XTS-40**
- BIXOLON XTS-43
- BIXOLON XTS-46

Printer Installation Wizard

Select Network Port
Select the port your printer is connected to.

☐ Create a new network port
☒ Use an existing port:

Port	Type	Configuration
IP_192.168.1.1	Standard TCP/IP Port	192.168.1.1

☐ Show all ports

Buttons: Exit, < Previous, Next >, Configure

“Create a new network port” option opens the Add Network Port window.
Enter port configuration for the desired printer, and then click “Next”.

Printer Installation Wizard

Add Network Port
Enter port configuration for the desired printer.

Port name:

Printer Name or IP Address:

Port number:

Buttons: Exit, < Previous, Next >

Installation Option	Description
Port name	defines the name for the newly created network port
Printer Name or IP Address	defines which printer (its name or IP address) connects to the newly created network port.
Port Number	number of the newly created network port. (default: 9100)

- 2) Click “Next” to proceed to Printer Options step. Refer to the description of printer options in 4-1-6 of this manual.

4-1-4 USB Port

When installing a USB printer, this application automatically detects the connected printer using its Plug and Play ID.

- 1) After connecting the printer to the USB port, turn on the printer. If the printer is already connected and powered on, disconnect and reconnect the USB cable.
- 2) If a printer connection is detected, it will automatically go to the end of the printer installation. Refer to the description of printer options in 4-1-6 of this manual and proceed to the next step.

The image displays two screenshots of the 'Printer Installation Wizard' application.

Left Screenshot: Detect USB Printer

- Title:** Printer Installation Wizard
- Section:** Detect USB Printer
- Text:** Automatically detect printer connected to USB port.
- Instructions:** Please connect the printer to USB port and then turn on the printer. If printer is already connected and turned on please disconnect and then reconnect the USB cable.
- Progress Bar:** A horizontal bar with a green segment indicating progress.
- Buttons:** Exit, < Previous, Next >

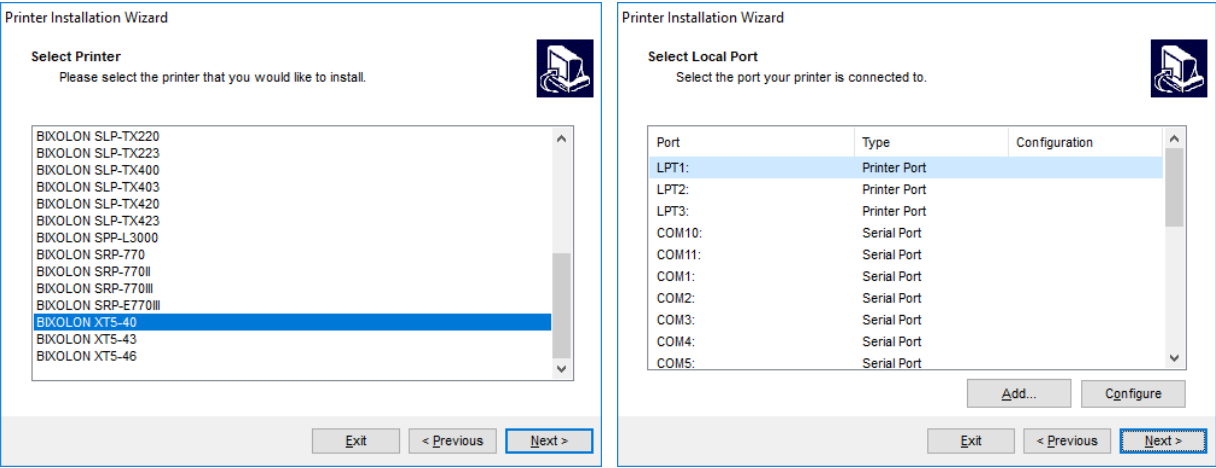
Right Screenshot: Printer Options

- Title:** Printer Installation Wizard
- Section:** Printer Options
- Text:** Please select printer options before installation.
- Fields:**
 - Printer name: BIXOLON XT5-40
 - Driver version: 5.2.00.7074
 - Port name: USB001
 - Select language: English (dropdown menu)
- Checkboxes:**
 - ☐ I want to use this printer as the Windows default printer
 - ☐ Launch installation of Bixolon Font downloader
- Buttons:** Exit, < Previous, Install

4-1-5 Other Port

You can install the printer driver by manually selecting a dedicated port to connect to the printer or all available ports on your system. Follow the procedure below.

1) Select the appropriate printer model.



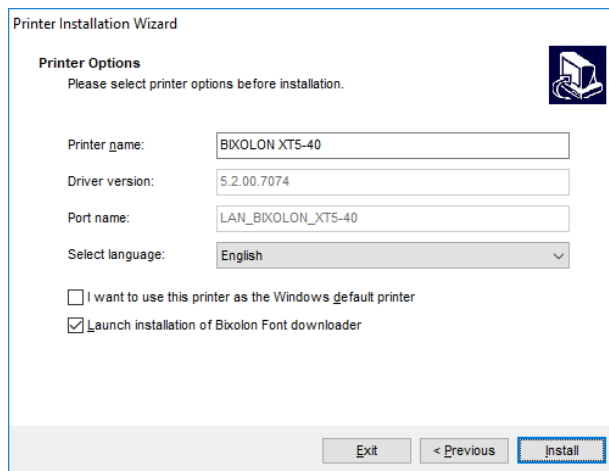
2) Select the port for connecting the printer. The port can either be an existing or a newly added one.

Function	Description
<u>A</u> dd... button	Creates a new port. Press the button to open Advanced TCP/IP Port Configuration window.
<u>C</u> onfigure button	Configures the local port

3) Click “Next” to proceed to Printer Options step. Refer to 4-1-6 in this manual.

4-1-6 Printer Options

Printer Options window allows you to set printer identity parameters.



Printer Installation Wizard

Printer Options
Please select printer options before installation.

Printer name:

Driver version:

Port name:

Select language:

☐ I want to use this printer as the Windows default printer

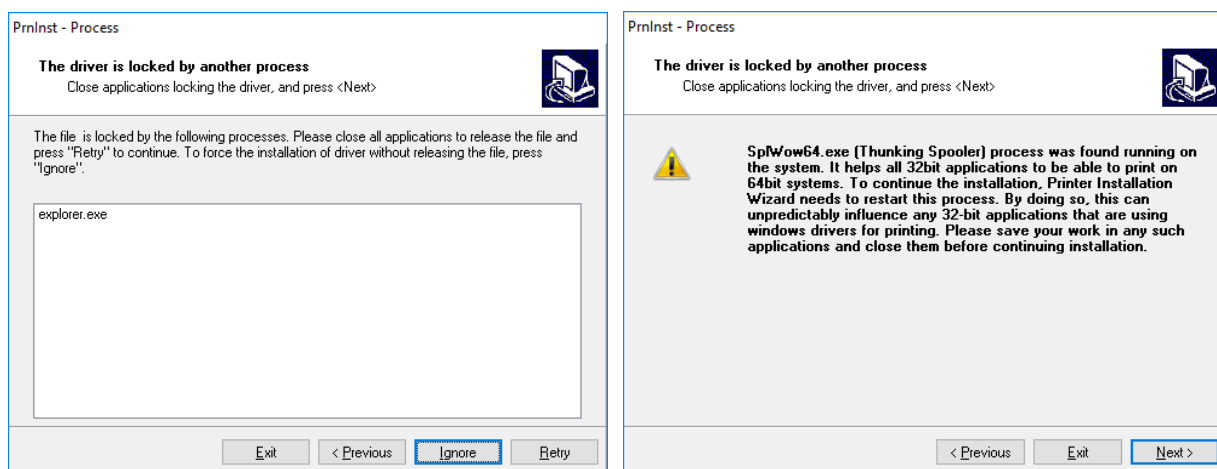
☒ Launch installation of Bixolon Font downloader

Printer Option	Description
Printer Name	sets custom printer name to make it easily recognizable after the installation.
Driver Version	information about the current driver version.
Port Name	information about the currently used port.
Select language	defines driver user interface language.

Enable “I want to use this printer as the Windows default printer” to set the current printer as the default system printer. And, enable “Launch installation of Bixolon Font downloader” to put true type fonts into the printer.

Click the "Install" to start installing the printer driver and font downloader. Please refer to 4-1-7 of this manual for a description of the additional installation procedure for the font downloader.

During the installation, uninstallation or update of the printer driver, “PrnInst.exe” application checks for applications that could lock the printer driver files. If detected, following windows can appear.



PrnInst - Process


The driver is locked by another process
Close applications locking the driver, and press <Next>

The file is locked by the following processes. Please close all applications to release the file and press "Retry" to continue. To force the installation of driver without releasing the file, press "Ignore".

explorer.exe

PrnInst - Process

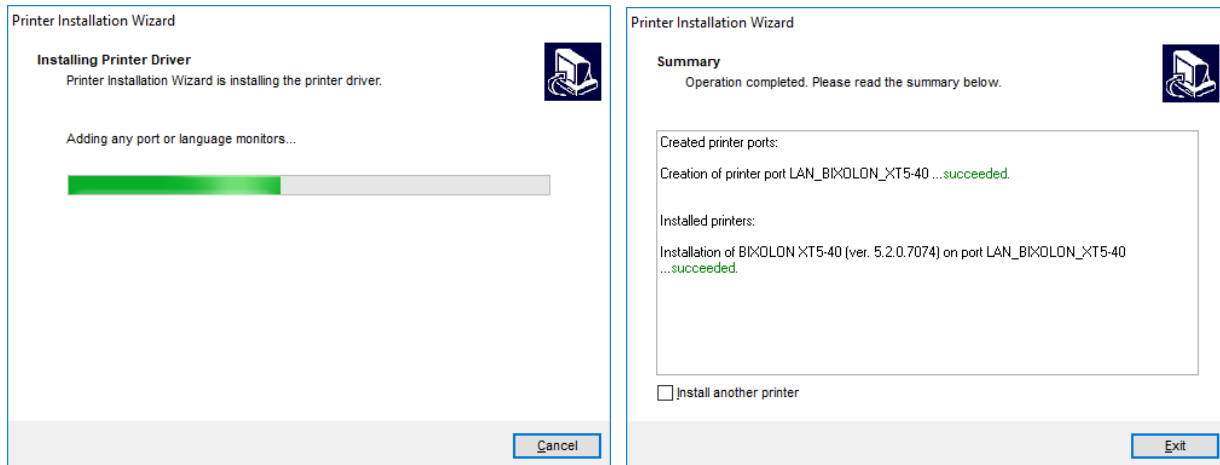
The driver is locked by another process
Close applications locking the driver, and press <Next>

 **SpfWow64.exe (Thinking Spooler) process was found running on the system. It helps all 32bit applications to be able to print on 64bit systems. To continue the installation, Printer Installation Wizard needs to restart this process. By doing so, this can unpredictably influence any 32-bit applications that are using windows drivers for printing. Please save your work in any such applications and close them before continuing installation.**

In this case, you have the following options, but please proceed with the installation by

clicking the "Ignore" or "Next" button

- Continue with the installation. New files are copied – installation is complete after restarting the computer.
- Stop the installation and restart the computer. After restarting, repeat the installation procedure.
- Close the applications that are locking the printer driver.

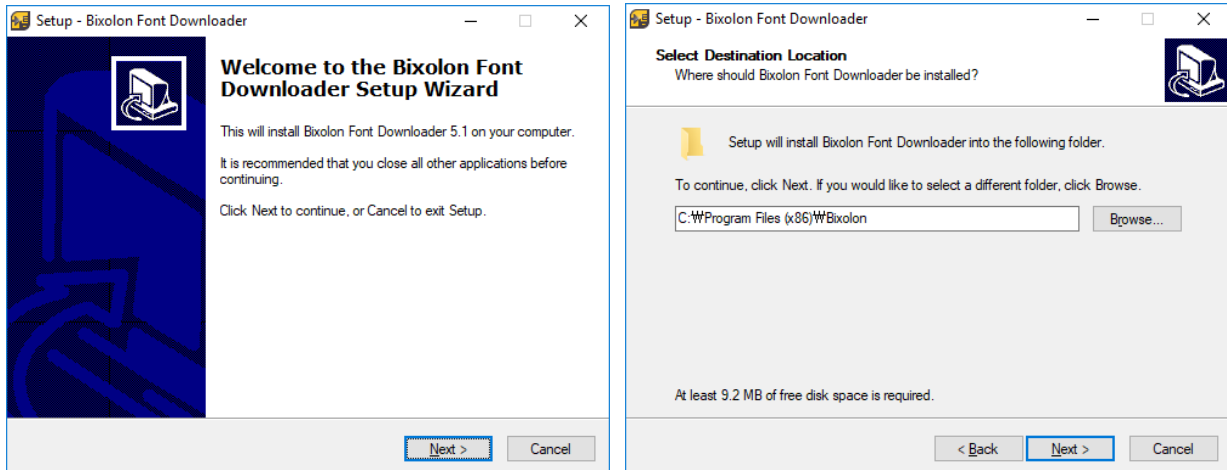


When the installation is complete, you will see the word "Succeeded". If you want to continue the installation of the printer, check the "Install another printer" checkbox and then click "Next". To exit the installation, click "Exit".

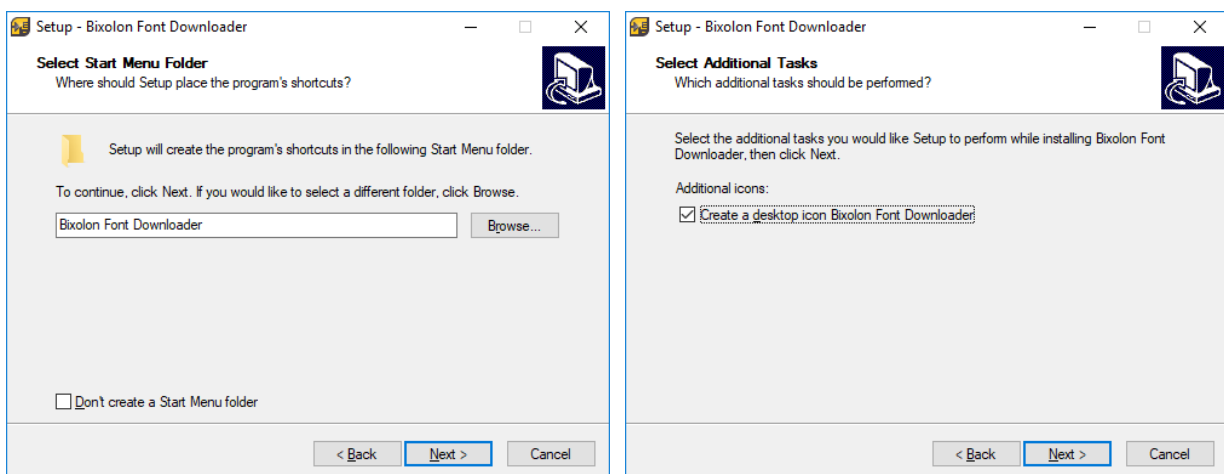
4-1-7 Font Downloader Installation

To install the font downloader, follow the procedure below.

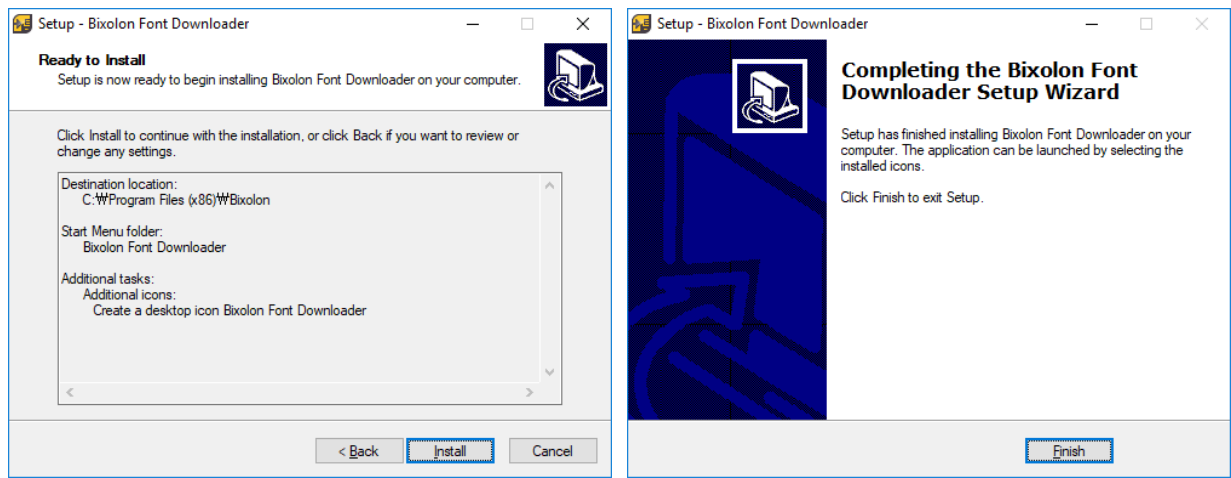
- 1) Click "Next" to proceed to next step.
- 2) Specify the installation folder and click "Next".



- 3) Check the name of the Start Menu folder to be created and click "Next".
- 4) Decide whether to create the shortcut icon and click "Next".



- 5) Review the contents for the installation and click the "Install".
- 6) Click "Finish" to complete the installation.



4-2 Printer Driver Uninstallation

- There are two buttons for deleting the printer driver. To delete everything related to the printer driver completely, refer to the manuals described in 4-2-1 and 4-2-2 of this manual, and then click that button to delete the printer driver.



Note

Make sure you are logged in as a user with sufficient rights before starting the driver removal process.

When removing a printer driver, make sure that:

- The printer is not set as a default printer.
- There are no print jobs waiting in the print queue.
- The printer is not locked by the Windows spooler process.

If you are unable to delete the printer driver, perform one of the following actions:

- Restart Windows spooler.
- Delete print jobs from the Windows spooler.
- Computer restart is required in certain cases.

4-2-1 Printer Driver Uninstallation

To remove a printer driver using “PrnInst.exe” application, follow these steps below.

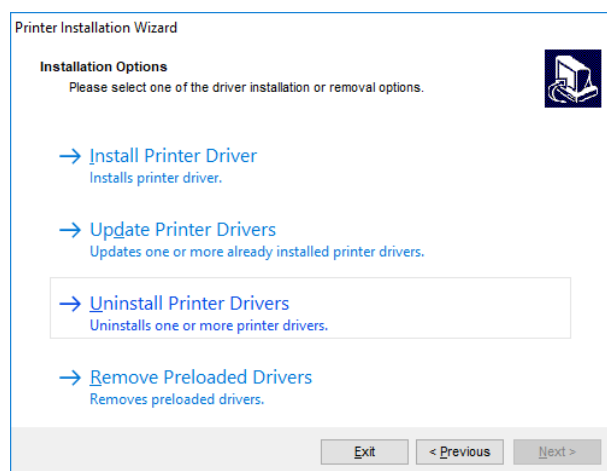
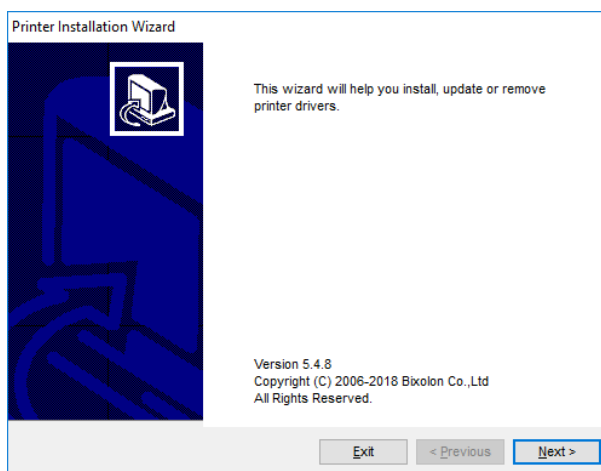
- 1) Run “PrnInst.exe” application. This application can be found in the default printer driver installation path. If you cannot find it, run the “Software_Label_Windows_Driver_V5.x.x.xxxx.exe” application.



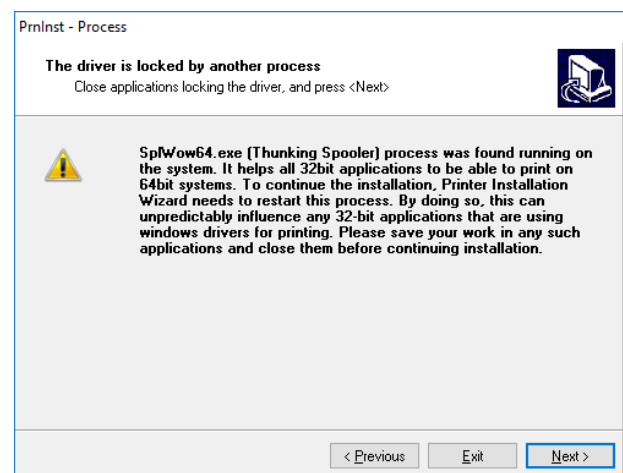
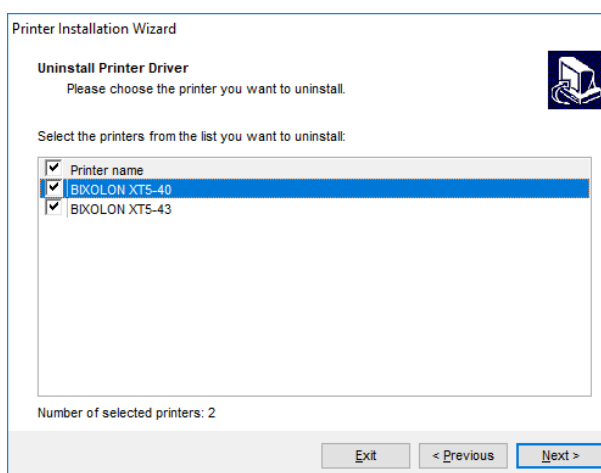
Note

Default Installation Path: C:\Program Files (x86)\BIXOLON\Printer drivers\Label Windows Driver

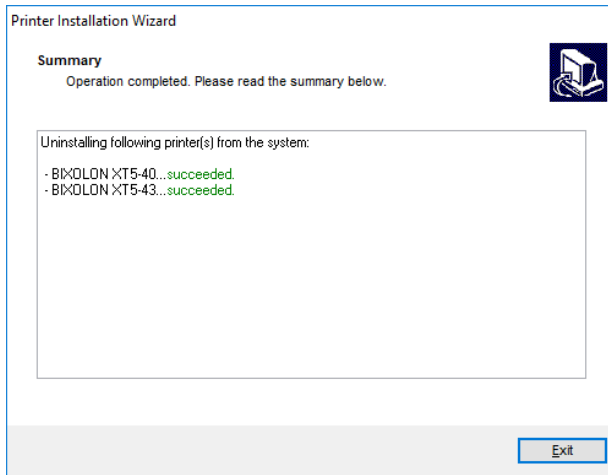
- 2) Click “Next” on the “Printer Installation Wizard” window.
- 3) Click “Uninstall Printer Drivers”.



- 4) Select the printer to be removed, and then click “Next”. If you see a warning about “Splwow64.exe” during removing printer driver, click “Next”. After clicking “Next”, “PrnInst.exe” application restarts the Splwow64.exe process. This unlocks the printer driver and completes the uninstallation process.



5) Click "Exit" to complete the uninstallation.



4-2-2 Printer Driver Package Uninstallation

To remove a printer driver package using “PrnInst.exe” application, follow these steps below.

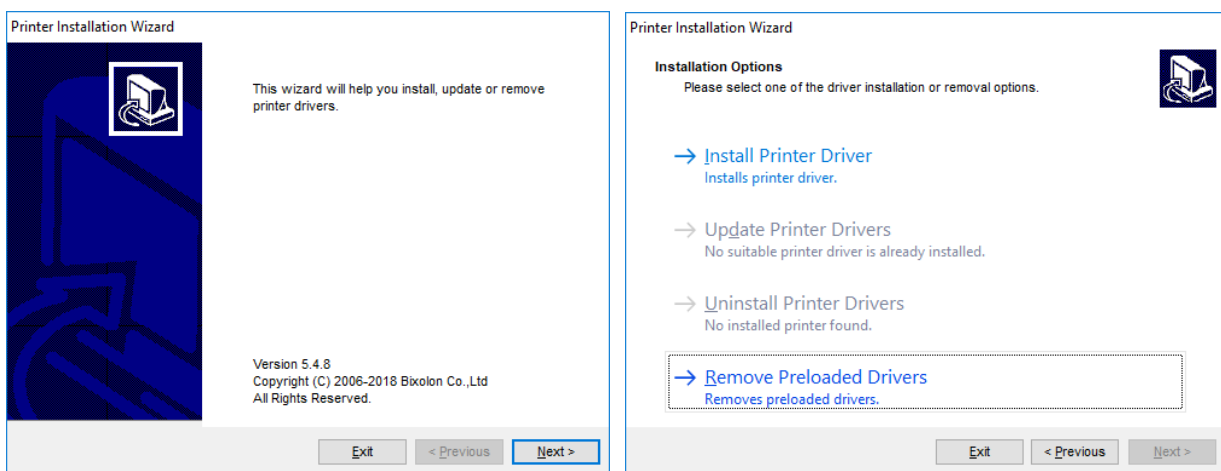
- 1) Run “PrnInst.exe” application. This application can be found in the default printer driver installation path. If you cannot find it, run the “Software_Label_Windows_Driver_V5.x.x.xxxx.exe” application.



Note

Default Installation Path: C:\Program Files (x86)\BIXOLON\Printer drivers\Label Windows Driver

- 2) Click “Next” on the “Printer Installation Wizard” window.
- 3) Click “Remove Preloaded Drivers”.

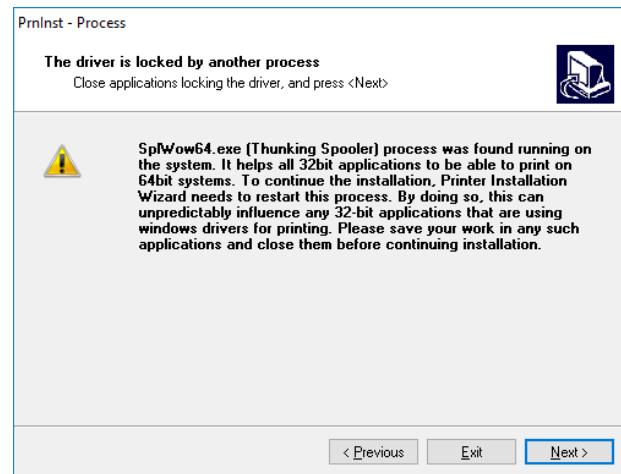
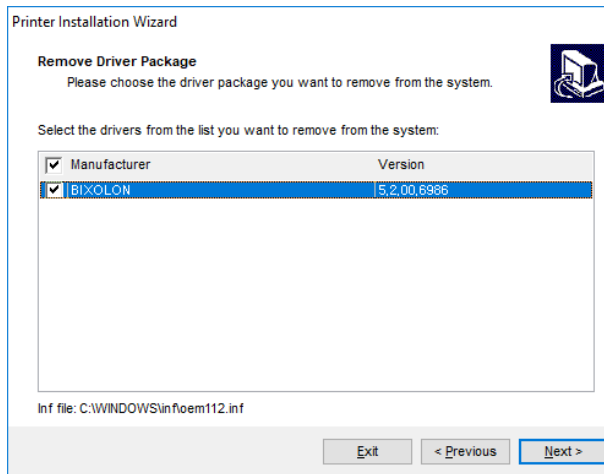


Note

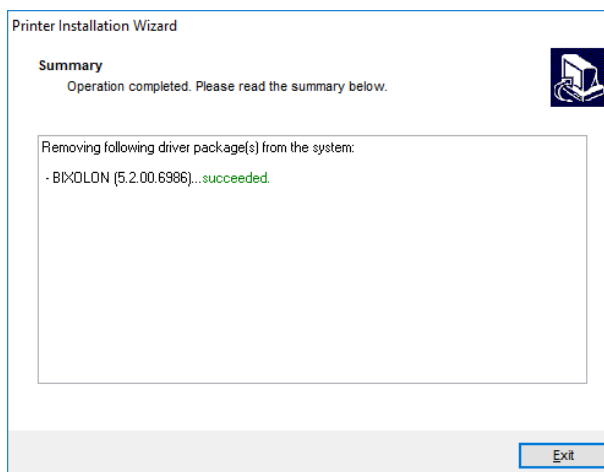
“The Remove Preloaded Drivers” option only removes the driver installation files from the system. To uninstall a driver, select option “Uninstall Printer” in the Options window.

Printer Driver

- 4) Select the driver to be removed, and then click "Next". While removing the driver package, the following warning message may appear. If you click the "Next (N)" button, you can restart the "Splwow64.exe" process to continue the removing procedure.



- 5) Click "Exit" to complete the uninstallation.



4-3 Printer Driver Update

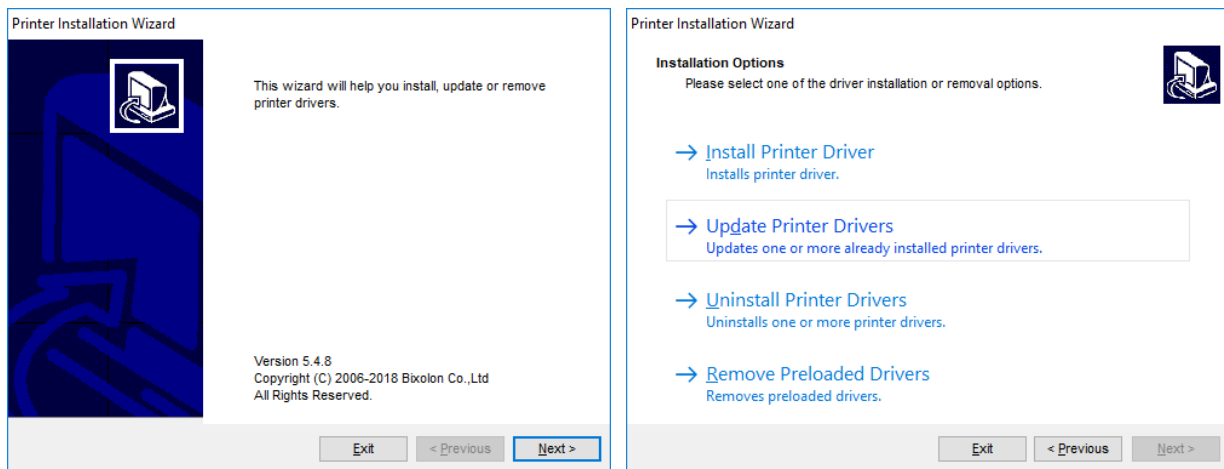
- To update a printer driver using “PrnInst.exe” application, follow these steps below.
- 1) Run “PrnInst.exe” application. This application can be found in the default printer driver installation path. If you cannot find it, run the “Software_Label_Windows_Driver_V5.x.x.xxxx.exe” application.



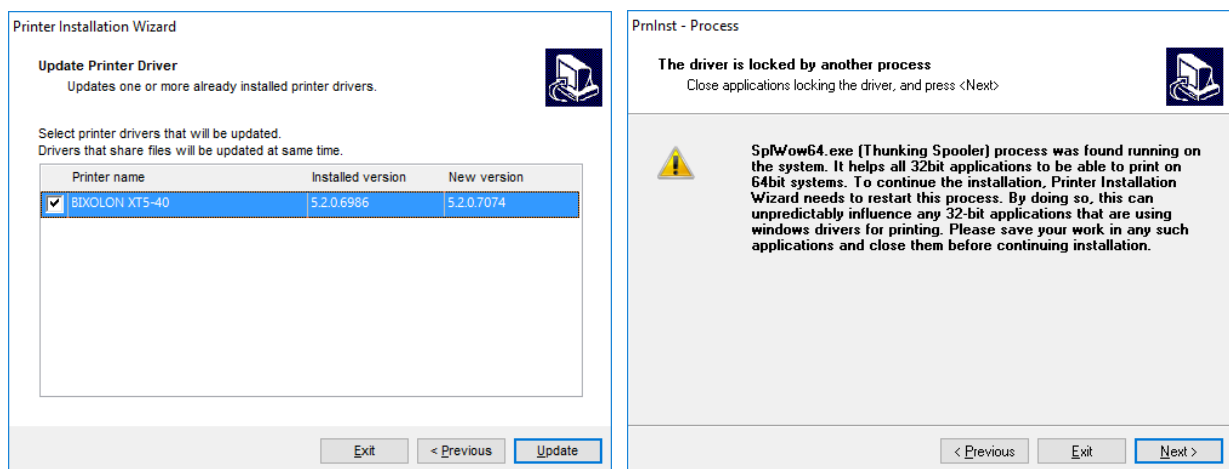
Note

Default Installation Path: C:\Program Files (x86)\BIXOLON\Printer drivers\Label Windows Driver

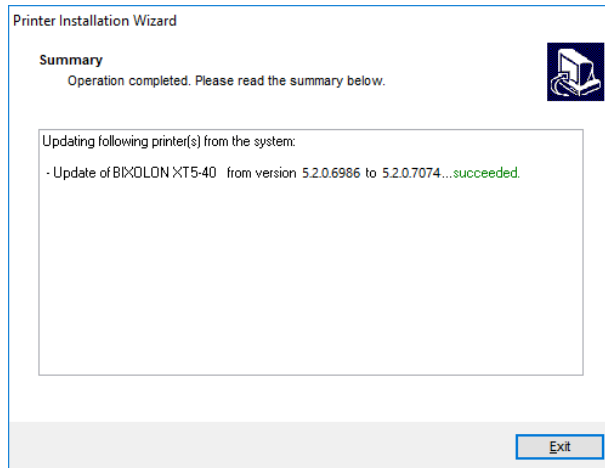
- 2) Click “Next” on the “Printer Installation Wizard” window.
- 3) Click “Update Printer Drivers”.



- 4) “Select” a printer to update its driver.
- 5) Compare Installed version column with New version column, and then click “Uppdate”. If you see a warning about “Splwow64.exe” during printer driver update, click “Next”. After clicking “Next”, “PrnInst.exe” application restarts the Splwow64.exe process. This unlocks the printer driver and completes the upgrade process.



6) Click “Exit”.



4-4 Steps for downloading fonts

- To download true type fonts to the printer, double-click the "Bixolon Font Downloader" icon on the desktop to launch the program and follow the procedure below.



Caution

Only hexadecimal characters in the range 0x00 to 0xFF can be downloaded. In other words, Korean, Chinese and Japanese characters are not downloadable.

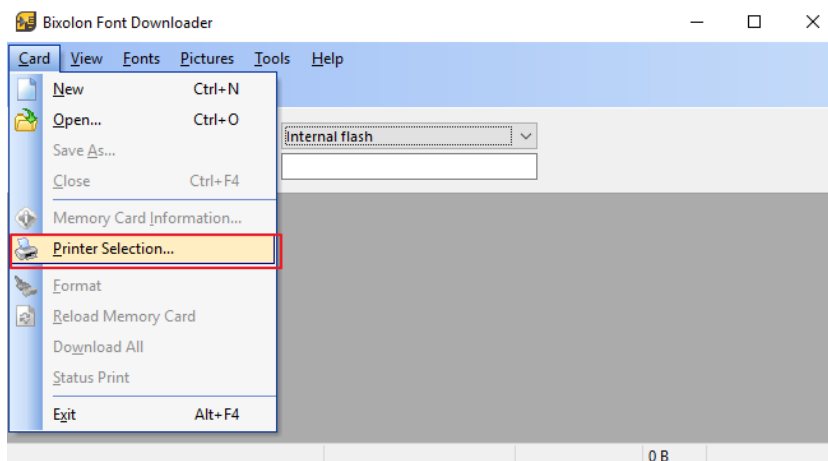
- 1) Run the font download application as an administrator.



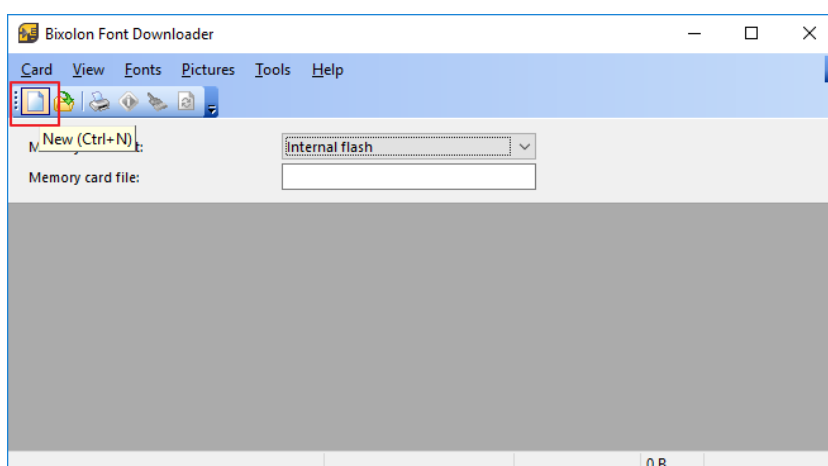
Note

Default Installation Path: C:\Program Files (x86)\BIXOLON\Font Download

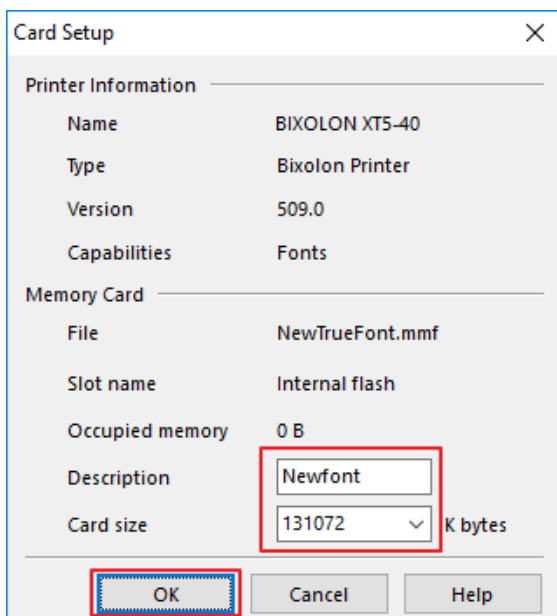
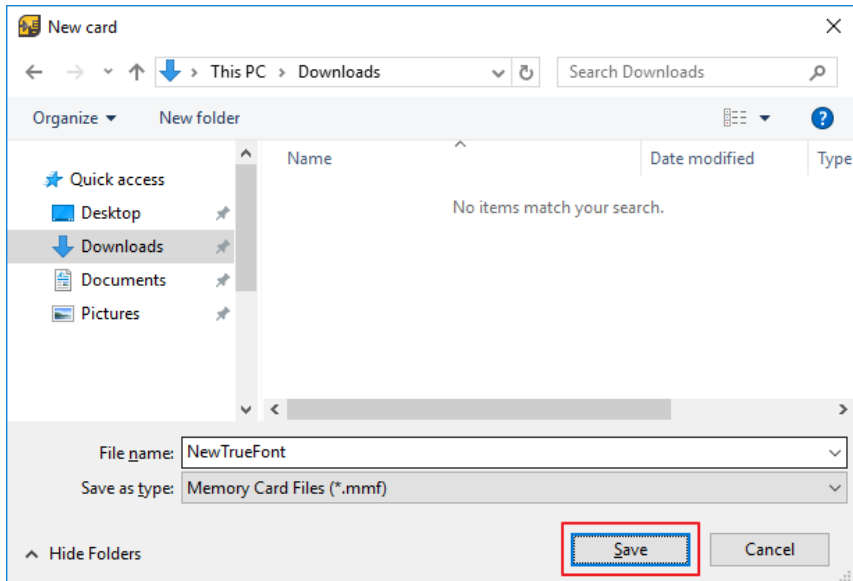
- 2) In the "Card" menu, click "Printer Selection" to select the printer to which the font will be downloaded.



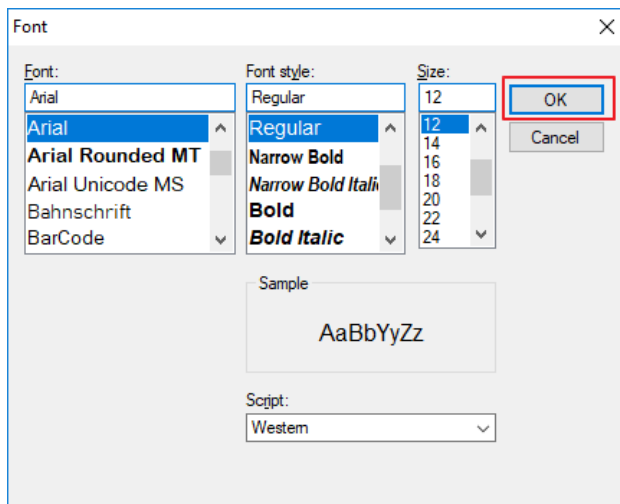
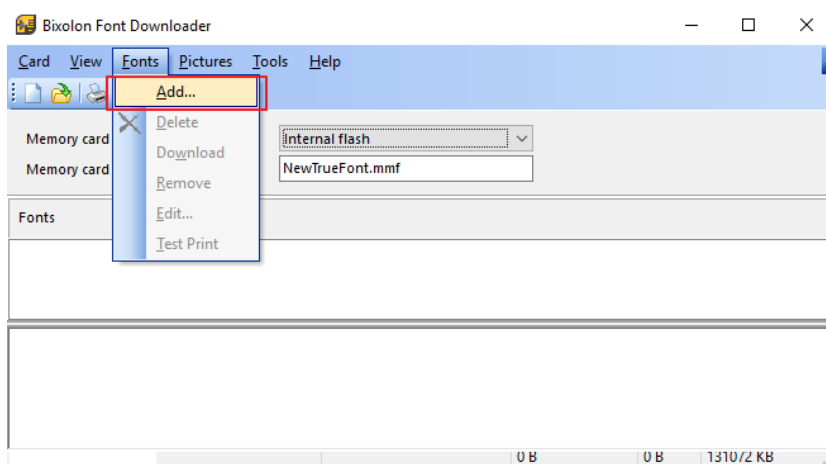
- 3) Click the New icon.



- 4) Set the path and name for the memory card file to be saved and click "Save".



- 5) In the "Fonts" menu, click "Add...". Select the font and size you want to download and click "OK".

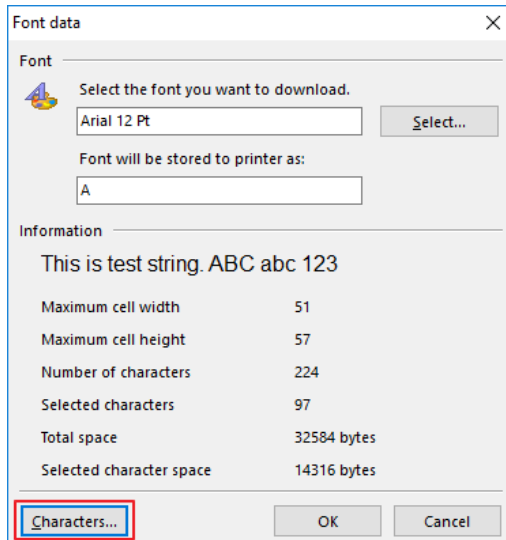


- 6) Check the information about the font to be downloaded. Click "Characters" to select the characters of the font to be downloaded.



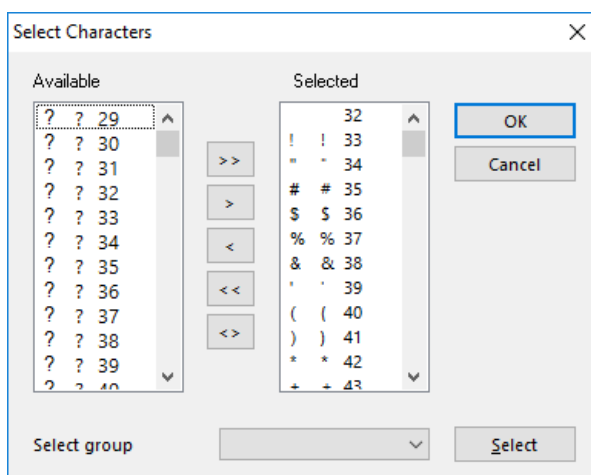
Note

- It is recommended to use the font name that is entered automatically, because manually typing the font name can cause backward compatibility problems.
- For the font name to be stored to the printer, single characters a - z and 0 - 9 are not allowed.

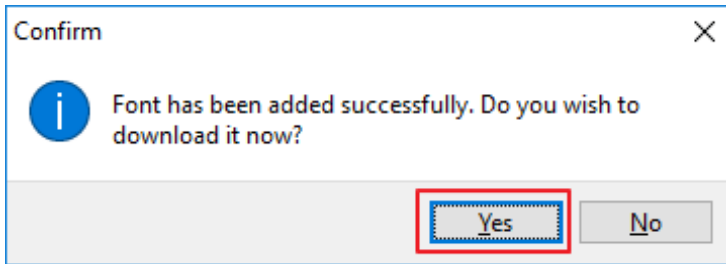


Symbol	Description
Available	Characters that can be added
Selected	Characters already added
>>	Add all the characters that can be added
>	Add selected characters
<	Remove selected characters
<<	Remove all added characters
<>	Replace the characters that can be added and the characters already added

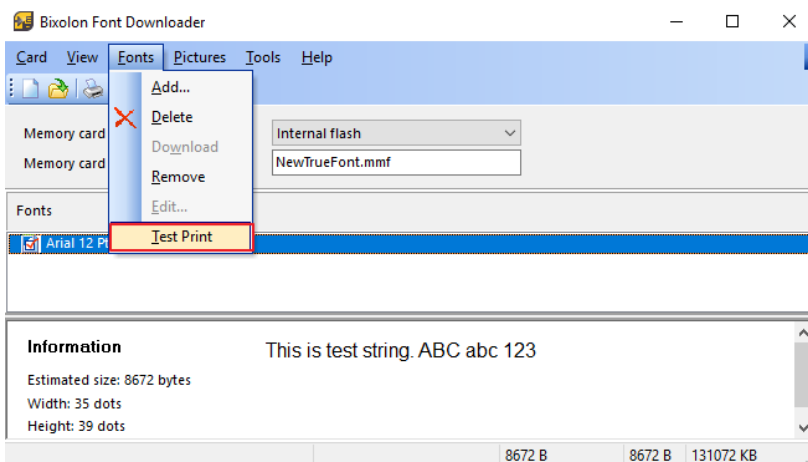
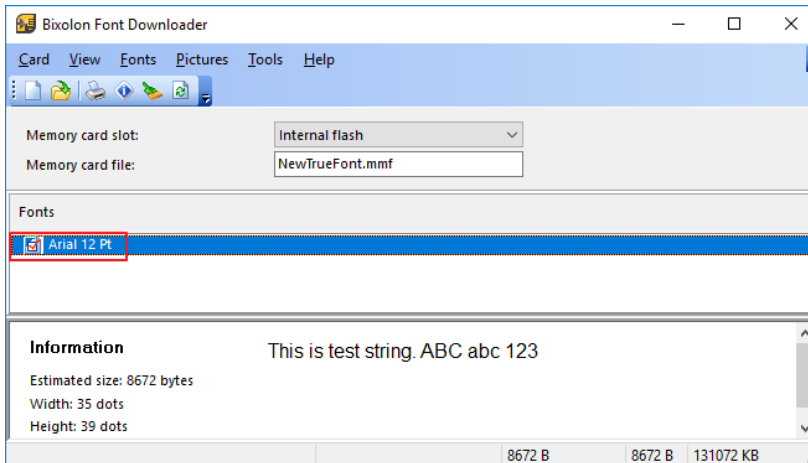
- 7) Check the character information to be added or deleted and click "OK".



8) Click "Yes" to proceed with the font download.



9) If the font download succeeds, the downloaded font is displayed in the font list.



10) In the "Fonts" menu, click "Test Print" to check if the fonts are downloaded normally. Downloaded fonts can also be printed using SLCS commands and can be used in a manner similar to the example below.

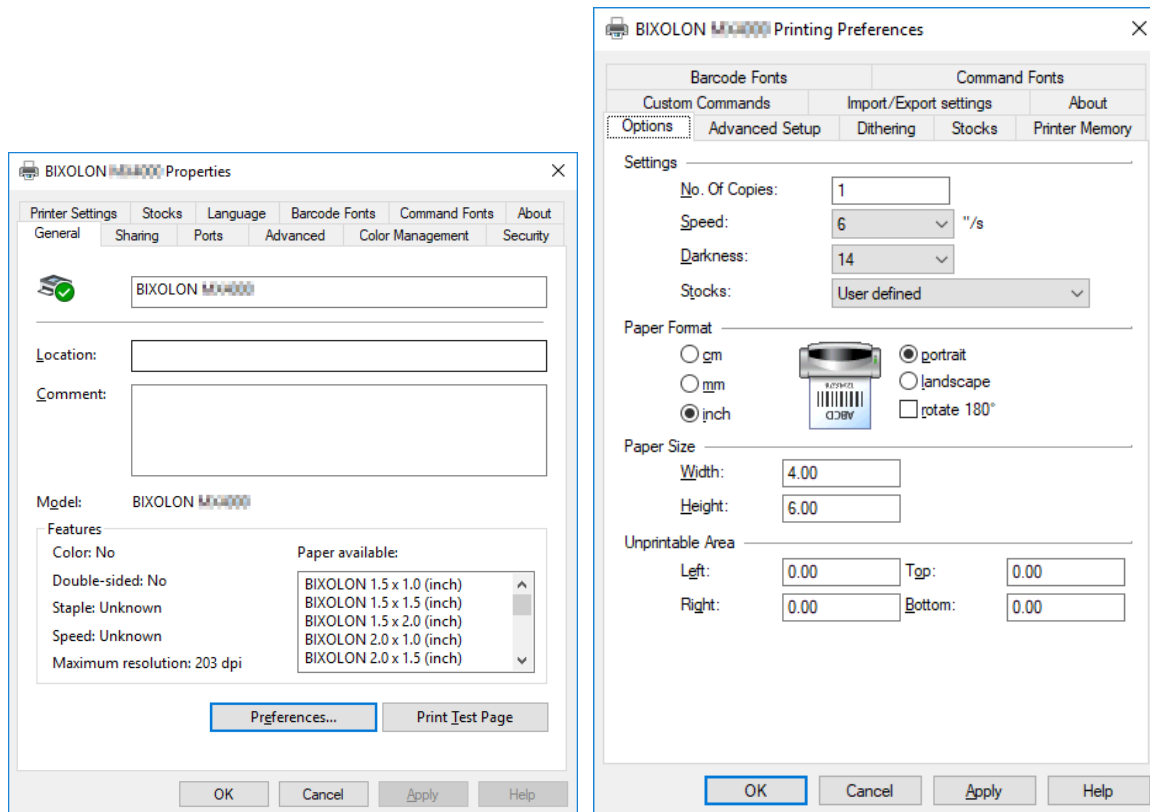
Eg) T10,10,**A**,1,1,0,0,N,N,'This is test'

Eg) T10,10,**B**1,1,0,0,N,N,'This is test'

5. Printer Driver Settings

5-1 Printing Preferences

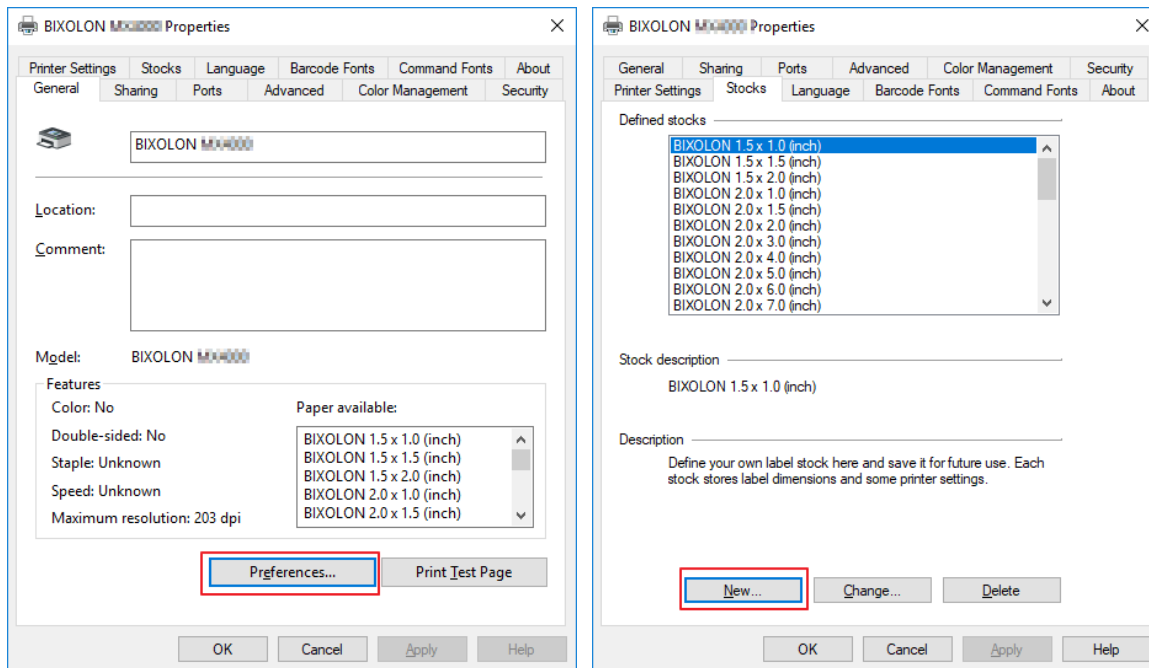
- The following functions can be configured after installing the printer driver.



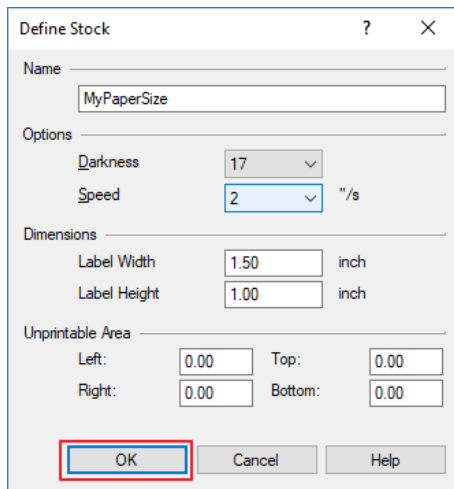
NO	Feature	Description
1	No. Of Copies	The number of copies
2	Speed	Set the printing speed
3	Darkness	The darkness level of printouts.
4	Portrait	The printer prints in portrait orientation.
5	Landscape	The printer prints in landscape orientation.
6	Rotate 180	The option of rotation 180 degree.
7	Width	Set the width of the paper.
8	Height	Set the height of the paper.
9	Unprintable Area	Set the unprintable area.

5-2 Adding new paper size

1) Click “Preferences...” and Click “New...”



2) Set a value you want and then click “OK”.



6. Specifications

6-1 Specifications

Model	DPI	Max Printable Width	Print Speed Support
SLP-D220	203 dpi	432 dots	2.5,3,4,5,6ips
SLP-D223	300 dpi	672 dots	2,2.5,3,4ips
SLP-DX220	203 dpi	432 dots	3,4,5,6ips
SLP-DX223	300 dpi	672 dots	2.5,3,4ips
SLP-TX220	203 dpi	432 dots	3,4,5,6ips
SLP-TX223	300 dpi	672 dots	2.5,3,4ips
SLP-D420	203 dpi	864 dots	2.5,3,4,5,6,7ips
SLP-D423	300 dpi	1248 dots	2,2.5,3,4ips
SLP-DX420	203 dpi	864 dots	3,4,5,6,7ips
SLP-DX423	300 dpi	1248 dots	3,4,5ips
SLP-TX420	203 dpi	864 dots	3,4,5,6,7ips
SLP-TX423	300 dpi	1248 dots	3,4,5ips
SLP-T400	203 dpi	864 dots	2.5,3,4,5,6ips
SLP-T403	300 dpi	1248 dots	2,2.5,3,4ips
SLP-T400R	203 dpi	864 dots	2.5,3,4,5,6ips
SLP-T403R	300 dpi	1248 dots	2,2.5,3,4ips
SLP-TX400(RFID)	203 dpi	864 dots	3,4,5,6,7ips
SLP-TX403(RFID)	300 dpi	1248 dots	3,4,5ips
SLP-DL410	203 dpi	864 dots	3,4,5ips
SLP-DL413	300 dpi	1248 dots	3,4,5ips
SPP-L3000	203 dpi	576 dots	1,2,3,4,5ips
SPP-L310	203 dpi	576 dots	1,2,3,4,5ips
SPP-L410	203 dpi	832 dots	1,2,3,4ips
SRP-770	203 dpi	832 dots	2.5,3,4,5ips
SRP-770II	203 dpi	832 dots	2.5,3,4,5ips
SRP-770III	203 dpi	832 dots	3,4,5ips
SRP-E770III	203 dpi	832 dots	3,4,5ips
XT5-40	203 dpi	832 dots	2 ~ 14ips
XT5-43	300 dpi	1248 dots	2 ~ 10ips
XT5-46	600 dpi	2496 dots	2,3,4,5ips
XD3-40d	203 dpi	832 dots	3,4,5ips
XD3-40t	203 dpi	832 dots	3, 4, 5ips
XL5-40CT	203 dpi	864 dots	3,4,5,6ips
XL5-43CT	300 dpi	1248 dots	2,3,4,5ips
XD5-40d	203 dpi	864 dots	3,4,5,6,7ips
XD5-43d	300 dpi	1248 dots	2,3,4,5ips
XD5-40t	203 dpi	864 dots	3,4,5,6ips
XD5-43t	300 dpi	1248 dots	2,3,4ips
XM7-40	203 dpi	832 dots	1,2,3,4,5ips
XM7-20	203 dpi	384 dots	1,2,3,4,5,6ips
XD5-40tR	203 dpi	864 dots	3,4,5,6ips
XD5-43tR	300 dpi	1248 dots	2,3,4ips
XT5-40NR	203 dpi	832 dots	2 ~ 14ips
XT5-43NR	300 dpi	1248 dots	2 ~ 10ips

Printer Driver

XT5-46NR	600 dpi	2496 dots	2,3,4,5ips
SRP-S3000	203 dpi	576 dots	2,3,4,5,6ips

6-2 Paper Size

1.5 x 1.0 inch (38.1 x 25.4 mm)	4.0 x 2.0 inch (101.6 x 50.8 mm)
1.5 x 1.5 inch (38.1 x 38.1 mm)	4.0 x 3.0 inch (101.6 x 76.2 mm)
1.5 x 2.0 inch (38.1 x 50.8 mm)	4.0 x 4.0 inch (101.6 x 101.6 mm)
2.0 x 1.0 inch (50.8 x 25.4 mm)	4.0 x 6.0 inch (101.6 x 152.8 mm)
2.0 x 1.5 inch (50.8 x 38.1 mm)	4.0 x 8.0 inch (101.6 x 203.2 mm)
2.0 x 2.0 inch (50.8 x 50.8 mm)	4.0 x 12.0 inch (101.6 x 304.8 mm)
3.0 x 1.0 inch (76.2 x 25.4 mm)	
3.0 x 1.5 inch (76.2 x 38.1 mm)	
3.0 x 2.0 inch (76.2 x 50.8 mm)	
3.5 x 1.0 inch (88.9 x 25.4 mm)	
3.5 x 1.5 inch (88.9 x 38.1 mm)	
3.5 x 2.0 inch (88.9 x 50.8 mm)	
3.5 x 3.0 inch (88.9 x 76.2 mm)	
3.5 x 4.0 inch (88.9 x 101.6 mm)	
3.5 x 6.0 inch (88.9 x 152.8 mm)	
4.0 x 1.0 inch (101.6 x 25.4 mm)	
4.0 x 1.5 inch (101.6 x 38.1 mm)	

6-3 Barcode Fonts

- Barcode fonts below can be used from some windows application. Barcode symbol will not be displayed. Only barcode data will be shown on screen but barcode will print correctly.

No	Font Name	1d / 2d
1	BIXOLON CODABAR	One-dimensional Barcodes
2	BIXOLON CODE128	
3	BIXOLON CODE128A	
4	BIXOLON CODE128B	
5	BIXOLON CODE128C	
6	BIXOLON CODE39	
7	BIXOLON CODE93	
8	BIXOLON EAN13	
9	BIXOLON EAN8	
10	BIXOLON I2OF5	
11	BIXOLON IMB	
12	BIXOLON UCC/EAN128	
13	BIXOLON UPC-A	
14	BIXOLON UPC-E	
15	BIXOLON MAXICODE	Two-dimensional Codes
16	BIXOLON PDF417	
17	BIXOLON QR	
18	BIXOLON DATAMATRIX	

Copyright

© BIXOLON Co., Ltd. All rights reserved.

This user manual and all property of the product are protected under copyright law. It is strictly prohibited to copy, store, and transmit the whole or any part of the manual and any property of the product without the prior written approval of BIXOLON Co., Ltd. The information contained herein is designed only for use with this BIXOLON product. BIXOLON is not responsible for any direct or indirect damages, arising from or related to use of this information.

- The BIXOLON logo is the registered trademark of BIXOLON Co., Ltd.
- All other brand or product names are trademarks of their respective companies or organizations.

BIXOLON Co., Ltd. maintains ongoing efforts to enhance and upgrade the functions and quality of all our products.

In the following, product specifications and/or user manual content may be changed without prior notice.

Caution

Some semiconductor devices are easily damaged by static electricity. You should turn the printer "OFF", before you connect or remove the cables on the rear side, in order to guard the printer against the static electricity. If the printer is damaged by the static electricity, you should turn the printer "OFF".

Revision history

Rev.	Date	Page	Description
5.00	12.03.18	-	New
5.01	04.06.18	All	Description added/modified related to driver installation/uninstallation. Information of supported printers modified. Description for font downloader added. Most of screen shot images are changed.
5.02	18.01.19	4, 6, 9, 27	- Information of supported printers added. - Description added for Bluetooth port
5.03	12.02.19	4,27	Information of supported printers added.(XD3-40d)
5.04	21.06.19	4,27	Information of supported printers added. (XD3-40t, XL5-40, XL5-43, XD5-40d, XD5-43d)
5.05	13.11.19	4,27	Information of supported printers added. (XD5-40t, XD5-43t, XM7-40) Name of supported printers changed (XL5-40 -> XL5-40CT, XL5-43 -> XL5-43CT) Print speed support changed (XD5-40d: 7ips is added)
5.06	24.02.20	4,27	Information of supported printers added (XM7-20)
5.07	16.09.20	4,27,30	- Information of supported printers added (XD5-40tR / XD5-43tR / XT5-40NR / XT5-43NR / XT5-46NR, SRP-S3000) - Information of supported printers modified (Delete SLP-TX400/TX403 RFID word) - Information of supported OS list modified (Delete Windows XP, Windows Vista, Windows Server2003) -Change words "any" -> "some"